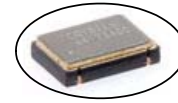


# Crystek Corporation



## WLAN Clock Oscillator



Designed for WLAN

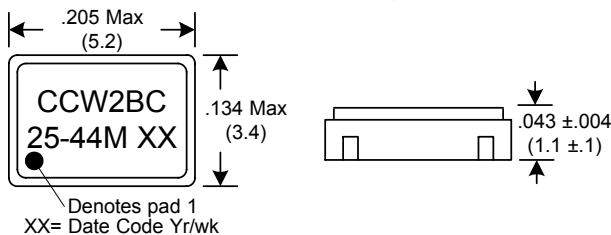
Ultra-Miniature for small layout requirement. Each oscillator is produced using only the best raw materials. NPC IC, Xray sorted quartz blanks and automated clean room production enable Crystek to provide superior quality. Many others may look the same but do not compare.

### CCWLAN-2BC-25-44.000 3.2X5 mm SMD, 3.3V, CMOS

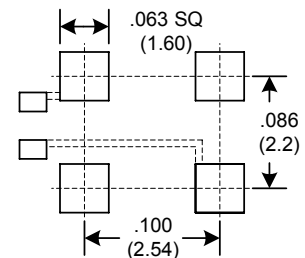
<b>Frequency Range:</b>	44.000MHz
<b>Frequency Stability:</b>	±25ppm Max (inclusive all conditions)
<b>Temperature Range:</b>	
Operating:	-20°C to 70°C
<b>Storage:</b>	-55°C to 120°C
<b>Input Voltage:</b>	3.3V ± 0.165V
<b>Input Current:</b>	10mA Max
Standby Current:	5uA Max
<b>Output:</b>	CMOS
Symmetry:	45/55% Max @ 50% Vdd
Rise/Fall Time:	4ns Max @ 20% to 80% Vdd
Logic:	"0" = 10% Vdd Max "1" = 90% Vdd Min
Load:	15pF Max
Start-Up Time:	10mS Max
Disable Time:	100nS Max
Enable Time:	10mS Max
<b>Aging:</b>	<3ppm 1st/yr, <1ppm every year thereafter

Dimensions inches (mm)

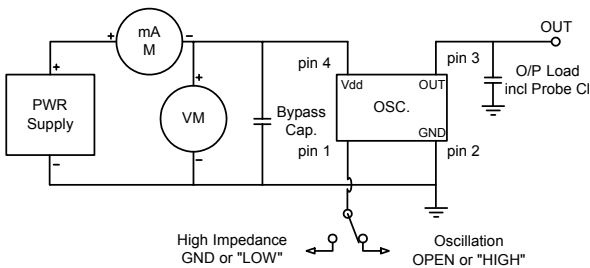
All dimensions are Max unless otherwise specified.



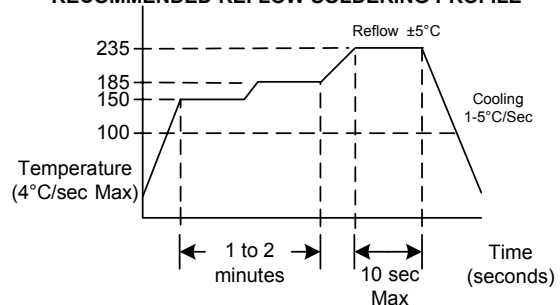
#### SUGGESTED PAD LAYOUT



0.01uF Bypass Capacitor Recommended



#### RECOMMENDED REFLOW SOLDERING PROFILE



Tri-State Function	
Function pin 1	Output pin
Open	Active
"1" level 2.3V Min	Active
"0" level 0.4V Max	High Z

Available on Tape and Reel in quantities of 1,000 pcs.

Specifications subject to change without notice.

Rev. C

## Crystek Crystals Corporation

12730 Commonwealth Drive : Fort Myers, FL 33913 : 239-561-3311 : 800-237-3061 : FAX 239-561-1025 : www.crystek.com